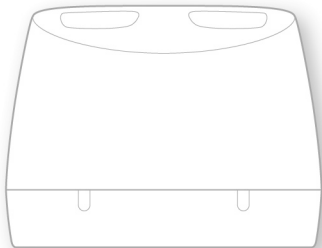


connexx



Charging Station B-P/B-HP/R/B-M

User Guide

Content

Before you start	4
<hr/>	
Components	6
Connecting the USB power cable	7
Charging	8
<hr/>	
Correct position of the hearing aids	10
Charging status	11
Charging tips	12
Further information	21
<hr/>	
Maintenance and care	21
Troubleshooting	22

Important safety information	24
General warnings	24
Personal safety	26
Product safety	31
Important information	33
Explanation of symbols	33
Operating, transport, and storage conditions	35
Technical data of the power supply adapter	37
Disposal information	37
Conformance information	38
Country-specific information	39

Before you start

This device is intended to charge our specific hearing aids with built-in power cells (lithium-ion rechargeable batteries). Your Hearing Care Professional will advise you on the compatible models.

The charger is only intended for indoor use. Observe and follow the operating conditions in section "Operating, transport, and storage conditions".

The charger is not intended as a means of storage for transportation of hearing aids.



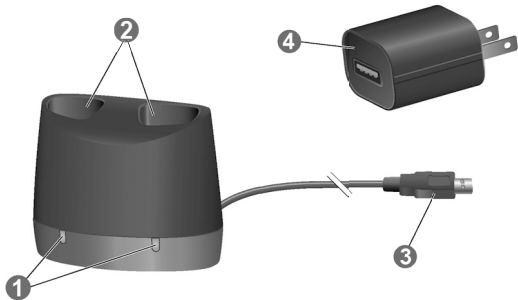
CAUTION

Read this user guide thoroughly and completely and follow the safety information in this document to avoid damage or injury.



The device may not look exactly like the guiding illustrations in these instructions. We reserve the right to make any changes we consider necessary.

Components



1 Status LEDs

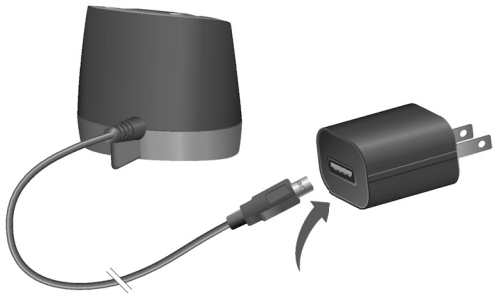
3 Non-detachable USB power cable

2 Charging slots

4 Power adapter

Connecting the USB power cable

- ▶ Connect your USB power cable to the provided power adapter.



Charging



NOTICE

Please make sure that the power plug is easily accessible to remove it from power supply if necessary.

- ▶ Connect the charger to the power supply.
LEDs for each charging slots blink 3 times to indicate that the charger has power and is ready for use.

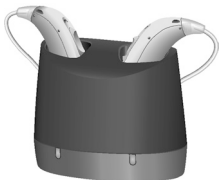
- ▶ Put the hearing aids in the charging slots as shown in the picture. You can charge both hearing aids at the same time. The hearing aids are automatically turned off and start charging. The charging status is indicated, see table "Charging status" on the next pages.



- ▶ When you want to use your hearing aids, take them out of the charger. They will automatically turn on.
- ▶ You can leave the charger plugged in or remove it from the power supply.

Correct position of the hearing aids

- ▶ If not indicated differently, the left and right hearing aids can be inserted into either charging slot. The slots are not side specific.
- ▶ Make sure the bottom parts of the hearing aids are placed well into the charging slots. Correct placement will be indicated by the LED.



Charging status

LED	Status description
-----	--------------------



No LED light:

Charger is not connected to power supply.

No hearing aid is inserted in the respective charging slot or the hearing aid is not inserted correctly.

3x



Green LED light blinks 3 times:


Charger is connected to a power supply and ready to charge.




Flashing green LED light:

Charging in progress.

LED	Status description
-----	--------------------

	Solid green LED light: Hearing aid is fully charged.
---	---

 3x	Red LED light blinks 3 times in 2 seconds: Error Read more in section "Troubleshooting".
--	---

Charging tips

You may have some questions on how to best charge your hearing aids. Read the questions and answers below. If you have more questions, your Hearing Care Professional will help you.



How often do I need to charge the hearing aids?

We recommend charging the hearing aids daily, even if the power cell is not empty. Charge them overnight so you can be sure to start your day with fully-charged hearing aids.



How long does charging take?

A full charging cycle takes approximately 3 to 4 hours.

After 30 minutes, it is possible to use your hearing aids for up to 7 hours.

Charging times may vary due to the use of the hearing aids and the age of the power cell.



Can I leave the hearing aids in the charger?

Even when fully charged, you can leave the hearing aids in the charger. They automatically stop charging when they are fully charged.



What happens if I forgot to charge?

Your hearing aids will automatically switch-off when the power cell is empty. Charge the hearing aids as soon as possible.

Hearing aids which have not been charged for over 6 months may be damaged due to an unrecoverable deep-discharge of the power cell. Deep-discharged power cells cannot be charged anymore and have to be replaced.



What if I intend not to use the hearing aids for several days or longer?

- Short-term storage (up to several days): Turn off your hearing aids via the push button or place them in the powered charger.

The charger must be connected to the power supply. If the charger is not connected to power supply and you place your hearing aids in the charger, the hearing aids are **not** turned off.

Note that when you turn off the hearing aids via a remote control or smartphone app, the hearing aids are **not** turned off completely. They are in standby-mode and still draw some power.

- Long-term storage (weeks, months, ...): First, fully charge your hearing aids. Turn them off via the push button before storing them. We recommend to use drying products while storing the hearing aids.

At 6 month intervals you will have to charge the hearing aids to avoid an unrecoverable deep-discharge of the power cell. Deep-discharged power cells cannot be charged anymore and they have to be replaced. We recommend recharging more frequently than 6 months intervals.

Observe the storage conditions in hearing aids' user guide.

Ask your Hearing Care Professional for recommended drying products.



What should I pay attention to when charging?

The hearing aids and charger must be clean and dry. Observe the operation conditions in section "Operating, transport, and storage conditions". Avoid charging at high ambient temperatures, as this can shorten the life span and capacity of the power cell.

If you use the charger in a very warm environment, note that it will stop charging in order to cool down if the charger's temperature exceeds 45 °C. The LED light will blink 3 times in 2 seconds when this happens. Charging resumes automatically after the device has cooled down. Do not touch the hearing aids, they may be hot.



What should I pay attention to when using a power strip with energy-saving features?

- Turn on the power strip **before** you insert the hearing aids in the charger. Otherwise, the hearing aids may not be detected by the charger.
- Do not turn off the power strip **while** the hearing aids are in charger. Otherwise the hearing aids will automatically turn on and discharge in the charger.

Before you turn off the power strip, remove the hearing aids from the charger and turn them off via the push button.



Why do my hearing aids get hot during charging?

Due to the nature of charging technology, low level of heat is emitted, which increases the temperature of the charger and devices. The devices can get very warm and may even be perceived as hot. This is normal and does not affect the quality of charging. It also happens to almost all electronic devices that are being charged, especially those using inductive charging technology (e.g. Qi).

To many people, any temperature above body temperature can feel hot to touch. Hence, some people may have the impression that the charger or hearing aid is overheating, even when it is just above body temperature. This is, however, merely a subjective feeling, and it does not in

any way entail that the hearing aid is overheating or that anything is wrong.

If you feel that your hearing aids are too hot to the touch, please insert them only after they have cooled down and until you feel comfortable with the temperature of the devices.

In general, if you wish to decrease the temperature of the hearing aids, you may do the following:

- Keep the lid open when charging.
- Move the charger away from any heat sources/direct sunlight.
- Place the charger in an environment with lower ambient temperature.

Further information

Maintenance and care



NOTICE

Risk of injuries caused by electric shock!

- ▶ If cleaning is required, disconnect the charger from the power supply.
- ▶ Clean the charger with a soft, dry tissue.
- ▶ Never use running water or immerse the charger in water.
- ▶ Do not sterilize or disinfect the charger.
- ▶ After use and before placing in the charger, wipe the charging pins on the hearing aids with a soft, dry tissue to remove grease or moisture.

Troubleshooting

Problem and possible solutions

LED light is off.

- Check if the power supply is connected correctly.
-

LED light is blinking red 3 times.

An error in the charger has occurred.

- Take the hearing aids out of the charger and disconnect the charger from the power supply.
 - Reconnect the charger to the power supply and re-insert the hearing aids in the charging slots.
 - Charger has reached the temperature limit and needs to cool down. Charging is resumed when the temperature decreases below 45 °C.
-

If the LEDs are still blinking red:

- Take the hearing aids out of the charger and disconnect the charger from the power supply.
- Contact your Hearing Care Professional for support.

Consult your Hearing Care Professional if you encounter further problems.

Important safety information

General warnings

- Observe the operating conditions. Refer to the section "Operating, transport, and storage conditions".
- Pay special attention to protect your device from extreme heat (e.g. fire, microwave oven, induction oven or other high induction fields) and sunlight.
- Charge your hearing aids only with the approved charger. Ask your Hearing Care Professional for support.
- Do not disassemble the device.
- Do not use the device in explosive atmospheres.
- Do not use devices that are deformed or obviously damaged.

- Do not use the device when its performance after charging decreases considerably. Return the device to your Hearing Care Professional.
- Do not dispose of the device in fire or water.

In any of the above cases, return your device to the Hearing Care Professional.



WARNING

Risk of electric shock!

- ▶ Connect the charger only with a USB power supply which complies with IEC 60950-1 and/or IEC 62368-1.

Personal safety



WARNING

Risk of burns!

- ▶ Do not place anything other than your hearing aids in the charger.



WARNING

Risk of electrical shock!

- ▶ Do not use obviously damaged devices and return them to point of sale.



WARNING

Choking hazard!

Your device contains small parts which can be swallowed.

- ▶ Keep hearing aids, batteries and accessories out of reach of children and mentally disabled persons.
- ▶ If parts have been swallowed consult a physician or hospital immediately.



WARNING

Note that any unauthorized changes to the product may cause damage to the product or cause injury.

- ▶ Use only approved parts and accessories. Ask your Hearing Care Professional for support.
- ▶ Do not modify this product without authorization from the manufacturer.
- ▶ If this product is modified, appropriate inspection and testing must be conducted to ensure safe use of the product.



WARNING

Risk of explosion!

- ▶ Do not use your device in explosive atmospheres (e.g. in mining areas).



NOTICE

Charging systems may interfere with measuring devices and electronic equipment.

- ▶ In hospitals: The charger complies with applicable standards. Therefore use of the charger in hospitals should be permissible. Nevertheless the charger may interfere with highly sensitive devices. In those cases appropriate steps shall be taken (increase distance from sensitive devices or disconnect the charger from power supply).

Product safety



NOTICE

- ▶ Protect your devices from extreme heat. Do not expose them to direct sunlight.



NOTICE

- ▶ Protect your devices from high humidity.



NOTICE

- ▶ Do not dry your devices in the microwave oven.



NOTICE

- ▶ Do not drop. Internal components may get damaged.



NOTICE

Use of incompatible parts poses a risk of malfunction.

- ▶ Use only the power supply and country specific adapter that is provided with the charger.
- ▶ Do not insert incompatible or foreign objects into the charger port.
- ▶ Use standard USB power adapter which supports an output voltage of 5 V DC and an output current of 0.5 to 1 A.

Important information

Explanation of symbols

Symbols used in this document



Points out a situation that could lead to serious, moderate, or minor injuries.



Indicates possible property damage.



Advice and tips on how to handle your device better.

Symbols on the device or packaging



CE compliance label, confirms compliance with certain European Directives, refer to section "Conformance information".



Indicates the legal manufacturer of the device.



Do not dispose of the device with general domestic waste. Read more in section "Disposal information".



Read and follow the instructions in the user guide.



Medical device

Operating, transport, and storage conditions

Operating conditions

Temperature

10-35°C

50-95°F

Relative humidity

20-75%

Atmospheric pressure

700-1060 hPa

During extended periods of transport and storage, please observe the following conditions:

	Storage	Transport
Temperature	10-40°C	-20-60°C
	50-104°F	-4-140°F
Relative humidity	10-80%	5-90%
Atmospheric pressure	700-1060 hPa	700-1060 hPa

For other parts, such as hearing aids, other conditions may apply.

Technical data of the power supply adapter

Input voltage:	100-240 V AC
Input current:	0.5 A
Input frequency:	50-60 Hz
Output voltage:	5 V DC
Output current:	1 A

Disposal information

Recycle devices, accessories and packaging according to local regulations.

To avoid environmental pollution, do not throw the device into household trash. Dispose of devices according to local regulations.

Conformance information

The CE mark indicates conformity with the following European directives:

- Council Regulation 2017/745 (MDR)
- 2011/65/EU RoHS concerning the restriction of hazardous substances



The CE mark indicates conformity with certain European directives and regulations. The full text of the declaration of conformity can be obtained from www.wsaud.com/other.

This device complies with Part 15B of the FCC Rules and with CAN ICES-003 / NMB-003.

Operation is subject to the following conditions:

- This device may not cause harmful interference,
- this device must accept any interference received, including interference that may cause undesired operation, and
- the user shall keep a minimal distance of 20 cm (8 in) during the charging process.

Country-specific information

 **Legal Manufacturer**

WSAUD A/S

Nymøllevej 6

3540 Lynge

Denmark

Document No. 04480-99T04-7600 EN

Order/Item No. 210 006 65

Master Rev06, 01.2023

© 01.2023, WSAUD A/S. All rights reserved



www.wsa.com